
W

	Description	HP Part No.	Qty
1	Solenoid, pressure valve	425-553-HSP	1
2	Solenoid valve (NIPLOY-KZ), vent	425-554-HSP	1
3	Plate, manifold	301 -1 21 -HSP	1
4	Flow controller	330-055-HSP	1
5	Pressure regulator	330-086-HSP	1
Associated screws and washers			
A	Screw, M3 X 6 pan head	0515-0924	4
B	Screw, M4 X 1 2	051 5-0909	3
C	Washer, toothed D4	21 90-0640	3
D	Washer, flat D4	3050-0893	3

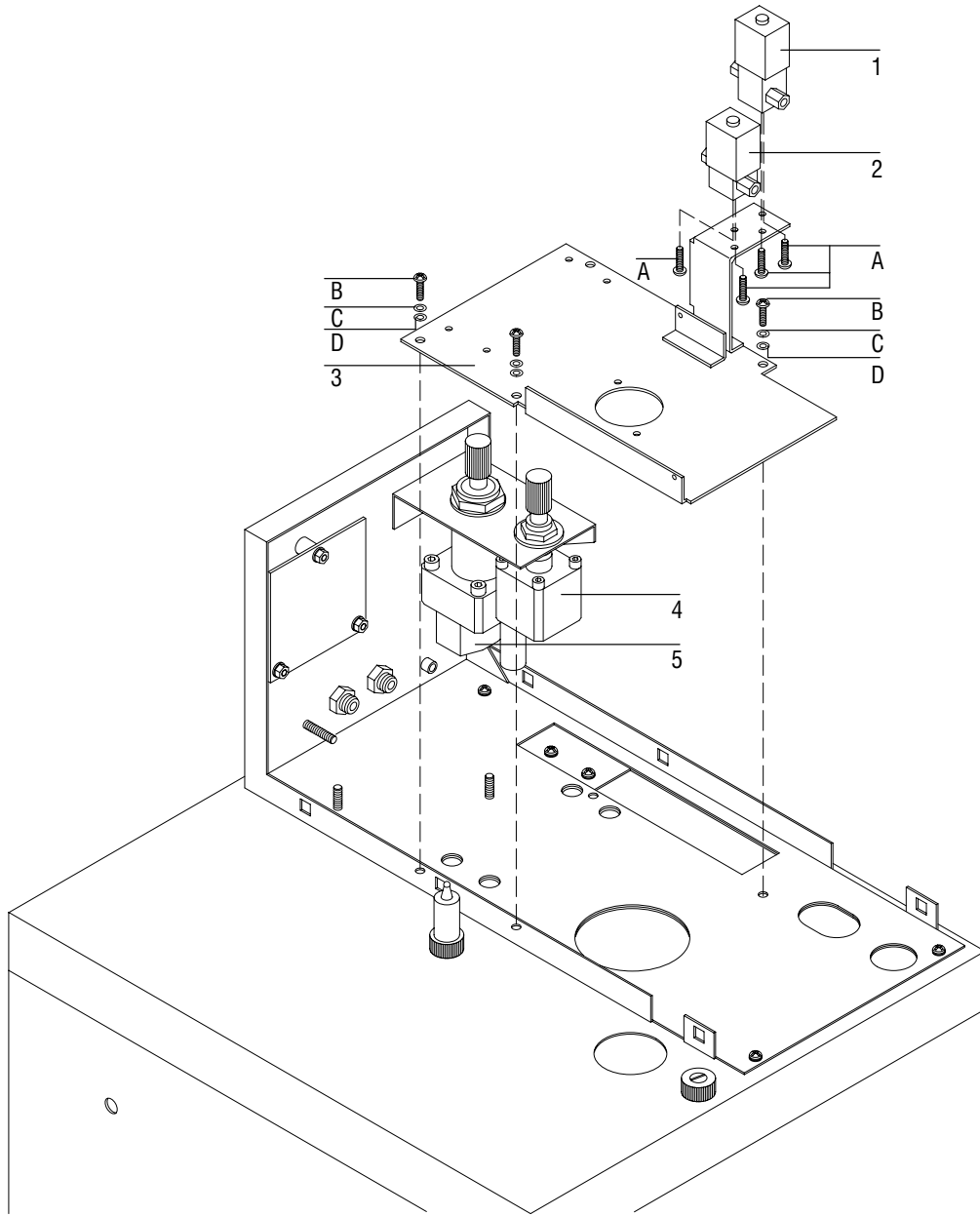


Figure 5-9. Pneumatic Assembly